

IRHNJ9A7234, IRHNJC9A7234

PD-97885B

Radiation Hardened Power MOSFET 250V, 17A, N-channel, R9 Superjunction Technology

Features

- Low $R_{DS(on)}$
- Fast switching
- Single event effect (SEE) hardened
- Low total gate charge
- Simple drive requirements
- Hermetically sealed
- Ceramic package
- Light weight
- Surface mount
- ESD rating: class 2 per MIL-STD-750, Method 1020

Potential Applications

- DC-DC converter
- Motor drives
- Electric propulsion

Product Validation

Qualified according to MIL-PRF-19500 for space applications

Description

IR HiRel R9 technology provides superior power MOSFETs for space applications. These devices have improved immunity to Single Event Effect (SEE) and have been characterized for useful performance with Linear Energy Transfer (LET) up to 88.6 MeV·cm²/mg. Their combination of low $R_{DS(on)}$ and faster switching times reduces the power losses and increases power density in today's high speed switching applications such as DC-DC converters and motor controllers. These devices retain all of the well-established advantages of MOSFETs such as voltage control, fast switching and temperature stability of electrical parameters.

Ordering Information

Table 1 Ordering options

Part number	Package	Screening Level	TID Level
IRHNJ9A7234	SMD-0.5	COTS	100 krad(Si)
JANSR2N7649U3	SMD-0.5	JANS	100 krad(Si)
IRHNJ9A3234	SMD-0.5	COTS	300 krad(Si)
JANSF2N7649U3	SMD-0.5	JANS	300 krad(Si)
IRHNJC9A7234	SMD-0.5 (Ceramic Lid)	COTS	100 krad(Si)
JANSR2N7649U3C	SMD-0.5 (Ceramic Lid)	JANS	100 krad(Si)
IRHNJC9A3234	SMD-0.5 (Ceramic Lid)	COTS	300 krad(Si)
JANSF2N7649U3C	SMD-0.5 (Ceramic Lid)	JANS	300 krad(Si)

Product Summary

- BV_{DSS} : 250V
- I_D : 17A
- $R_{DS(on), max}$: 110mΩ
- $Q_{G, max}$: 34nC
- REF: MIL-PRF-19500/775

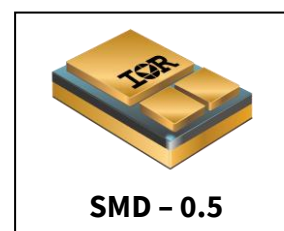


Table of contents

Table of contents

Features	1
Potential Applications.....	1
Product Validation.....	1
Ordering Information.....	1
Table of contents.....	2
1 Absolute Maximum Ratings	3
2 Device Characteristics	4
2.1 Electrical Characteristics (Pre-Irradiation).....	4
2.2 Source-Drain Diode Ratings and Characteristics (Pre-Irradiation)	5
2.3 Thermal Characteristics	5
2.4 Radiation Characteristics.....	5
2.4.1 Electrical Characteristics - Post Total Dose Irradiation	5
2.4.2 Single Event Effects – Safe Operating Area	6
3 Electrical Characteristics Curves (Pre-irradiation)	7
4 Test Circuits (Pre-irradiation)	11
5 Package outline – SMD-0.5	12
6 Package outline – SMD-0.5 with ceramic lid	13
Revision history.....	14

Absolute Maximum Ratings

1 Absolute Maximum Ratings

Table 2 Absolute Maximum Ratings (Pre-Irradiation)

Symbol	Parameter	Value	Unit
$I_{D1} @ V_{GS} = 12V, T_C = 25^\circ C$	Continuous Drain Current	17	A
$I_{D2} @ V_{GS} = 12V, T_C = 100^\circ C$	Continuous Drain Current	10.5	A
$I_{DM} @ T_C = 25^\circ C$	Pulsed Drain Current ¹	68	A
$P_D @ T_C = 25^\circ C$	Maximum Power Dissipation	75	W
	Linear Derating Factor	0.6	W/°C
V_{GS}	Gate-to-Source Voltage	± 20	V
E_{AS}	Single Pulse Avalanche Energy ²	331	mJ
I_{AR}	Avalanche Current ¹	17	A
E_{AR}	Repetitive Avalanche Energy ¹	7.5	mJ
dv/dt	Peak Diode Reverse Recovery ³	15.5	V/ns
T_J T_{STG}	Operating Junction and Storage Temperature Range	-55 to +150	°C
	Lead Temperature	300 (for 5s)	
	Weight	1.0 (Typical)	g

¹ Repetitive Rating; Pulse width limited by maximum junction temperature.

² $V_{DD} = 150V$, starting $T_J = 25^\circ C$, $L = 6.0mH$, Peak $I_L = 10.5A$, $V_{GS} = 20V$

³ $I_{SD} \leq 17A$, $di/dt \leq 1360A/\mu s$, $V_{DD} \leq 250V$, $T_J \leq 150^\circ C$

Device Characteristics

2 Device Characteristics

2.1 Electrical Characteristics (Pre-Irradiation)

Table 3 Static and Dynamic Electrical Characteristics @ $T_j = 25^\circ\text{C}$ (Unless Otherwise Specified)

Symbol	Parameter	Min.	Typ.	Max.	Unit	Test Conditions
BV_{DSS}	Drain-to-Source Breakdown Voltage	250	—	—	V	$V_{GS} = 0V, I_D = 1.0mA$
$\Delta BV_{DSS}/\Delta T_J$	Breakdown Voltage Temp. Coefficient	—	0.23	—	V/ $^\circ\text{C}$	Reference to 25°C , $I_D = 1.0mA$
$R_{DS(on)}$	Static Drain-to-Source On-State Resistance	—	—	110	m Ω	$V_{GS} = 12V, I_{D2} = 10.5A^1$
$V_{GS(th)}$	Gate Threshold Voltage	2.0	—	4.0	V	$V_{DS} \geq V_{GS}, I_D = 1mA$
$\Delta V_{GS(th)}/\Delta T_J$	Gate Threshold Voltage Coefficient	—	-8.7	—	mV/ $^\circ\text{C}$	
Gfs	Forward Transconductance	9.0	—	—	S	$V_{DS} = 15V, I_{D2} = 10.5A^1$
I_{DSS}	Zero Gate Voltage Drain Current	—	—	1.0	μA	$V_{DS} = 200V, V_{GS} = 0V$
		—	—	10		$V_{DS} = 200V, V_{GS} = 0V, T_J = 125^\circ\text{C}$
I_{GSS}	Gate-to-Source Leakage Forward	—	—	100	nA	$V_{GS} = 20V$
	Gate-to-Source Leakage Reverse	—	—	-100		$V_{GS} = -20V$
Q_G	Total Gate Charge	—	—	34	nC	$I_{D1} = 17A$
Q_{GS}	Gate-to-Source Charge	—	—	13		$V_{DS} = 125V$
Q_{GD}	Gate-to-Drain ('Miller') Charge	—	—	13		$V_{GS} = 12V$
$t_{d(on)}$	Turn-On Delay Time	—	—	25	ns	$I_{D1} = 17A^{**}$
t_r	Rise Time	—	—	25		$V_{DD} = 125V$
$t_{d(off)}$	Turn-Off Delay Time	—	—	50		$R_G = 7.5\Omega$
t_f	Fall Time	—	—	25		$V_{GS} = 12V$
$L_s + L_D$	Total Inductance	—	4.0	—	nH	Measured from center of Drain pad to center of Source pad
C_{iss}	Input Capacitance	—	1510	—	pF	$V_{GS} = 0V$
C_{oss}	Output Capacitance	—	240	—		$V_{DS} = 25V$
C_{rss}	Reverse Transfer Capacitance	—	1.0	—		$f = 1.0MHz$
R_G	Gate Resistance	—	1.0	—	Ω	$f = 1.0MHz$, open drain

** Switching speed maximum limits are based on manufacturing test equipment and capability.

¹ Pulse width $\leq 300 \mu\text{s}$; Duty Cycle $\leq 2\%$

Device Characteristics

2.2 Source-Drain Diode Ratings and Characteristics (Pre-Irradiation)

Table 4 Source-Drain Diode Characteristics

Symbol	Parameter	Min.	Typ.	Max.	Unit	Test Conditions
I_S	Continuous Source Current (Body Diode)	—	—	17	A	
I_{SM}	Pulsed Source Current (Body Diode) ¹	—	—	68	A	
V_{SD}	Diode Forward Voltage	—	—	1.2	V	$T_J = 25^\circ\text{C}$, $I_S = 17\text{A}$, $V_{GS} = 0\text{V}$ ²
t_{rr}	Reverse Recovery Time	—	—	335	ns	$T_J = 25^\circ\text{C}$, $I_F = 17\text{A}$, $V_{DD} \leq 50\text{V}$
Q_{rr}	Reverse Recovery Charge	—	—	3.6	μC	$di/dt = 100\text{A}/\mu\text{s}$ ²
t_{on}	Forward Turn-On Time	Intrinsic turn-on time is negligible (turn-on is dominated by $L_S + L_D$)				

2.3 Thermal Characteristics

Table 5 Thermal Resistance

Symbol	Parameter	Min.	Typ.	Max.	Unit
$R_{\theta JC}$	Junction-to-Case	—	—	1.67	$^\circ\text{C}/\text{W}$

2.4 Radiation Characteristics

IR HiRel radiation hardened MOSFETs are tested to verify their radiation hardness capability. The hardness assurance program at IR HiRel is comprised of two radiation environments. Every manufacturing lot is tested for total ionizing dose (per notes 3 and 4) using the TO-3 package. Both pre- and post-irradiation performance are tested and specified using the same drive circuitry and test conditions in order to provide a direct comparison.

2.4.1 Electrical Characteristics - Post Total Dose Irradiation

Table 6 Electrical Characteristics @ $T_J = 25^\circ\text{C}$, Post Total Dose Irradiation^{3, 4}

Symbol	Parameter	Up to 300krads (Si) ⁵		Unit	Test Conditions
		Min.	Max.		
BV_{DSS}	Drain-to-Source Breakdown Voltage	250	—	V	$V_{GS} = 0\text{V}$, $I_D = 1\text{mA}$
$V_{GS(th)}$	Gate Threshold Voltage	2.0	4.0	V	$V_{DS} \geq V_{GS}$, $I_D = 1\text{mA}$
I_{GSS}	Gate-to-Source Leakage Forward	—	100	nA	$V_{GS} = 20\text{V}$
	Gate-to-Source Leakage Reverse	—	-100		$V_{GS} = -20\text{V}$
I_{DSS}	Zero Gate Voltage Drain Current	—	1.0	μA	$V_{DS} = 200\text{V}$, $V_{GS} = 0\text{V}$
$R_{DS(on)}$	Static Drain-to-Source On-State Resistance (TO-3) ²	—	110	$\text{m}\Omega$	$V_{GS} = 12\text{V}$, $I_{D2} = 10.5\text{A}$
$R_{DS(on)}$	Static Drain-to-Source On-State Resistance (SMD-0.5) ²	—	110	$\text{m}\Omega$	$V_{GS} = 12\text{V}$, $I_{D2} = 10.5\text{A}$
V_{SD}	Diode Forward Voltage	—	1.2	V	$V_{GS} = 0\text{V}$, $I_F = 17\text{A}$

¹ Repetitive Rating; Pulse width limited by maximum junction temperature.² Pulse width $\leq 300\ \mu\text{s}$; Duty Cycle $\leq 2\%$ ³ Total Dose Irradiation with V_{GS} Bias. $V_{GS} = 12\text{V}$ applied and $V_{DS} = 0$ during irradiation per MIL-STD-750, Method 1019, condition A.⁴ Total Dose Irradiation with V_{DS} Bias. $V_{DS} = 200\text{V}$ applied and $V_{GS} = 0$ during irradiation per MIL-STD-750, Method 1019, condition A.⁵ Part numbers IRHNJ9A7234 (JANSR2N7649U3), IRHNJ9A3234 (JANSF2N7649U3), IRHNJC9A7234 (JANSR2N7649U3C), and IRHNJC9A3234 (JANSF2N7649U3C)

2.4.2 Single Event Effects – Safe Operating Area

IR HiRel radiation hardened MOSFETs have been characterized in heavy ion environment for Single Event Effects (SEE). Single Event Effects characterization is illustrated in Fig. 1 and Table 7.

Table 7 Typical Single Event Effects Safe Operating Area

LET (MeV·cm ² /mg)	Energy (MeV)	Range (μm)	V _{DS} (V)			
			V _{GS} = 0V	V _{GS} = -1V	V _{GS} = -5V	V _{GS} = -10V
35.7 ± 5%	486 ± 5%	59 ± 10%	250	250	250	250
58.5 ± 5%	865 ± 5%	69 ± 7.5%	250	250	250	250
88.6 ± 5%	1685 ± 5%	90 ± 5%	250	250	—	—

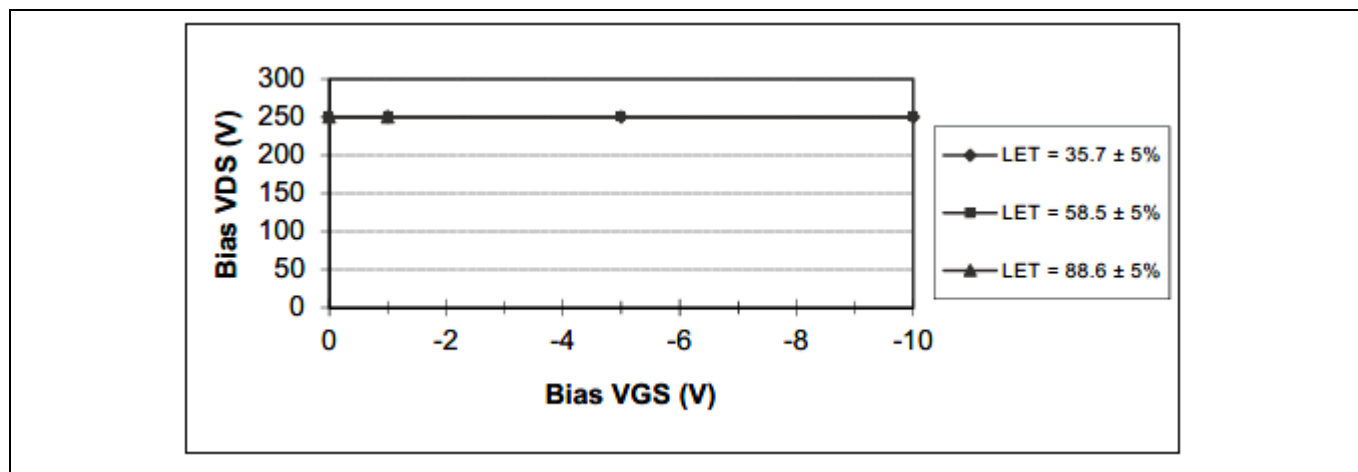


Figure 1 Typical Single Event Effect, Safe Operating Area

3 Electrical Characteristics Curves (Pre-irradiation)

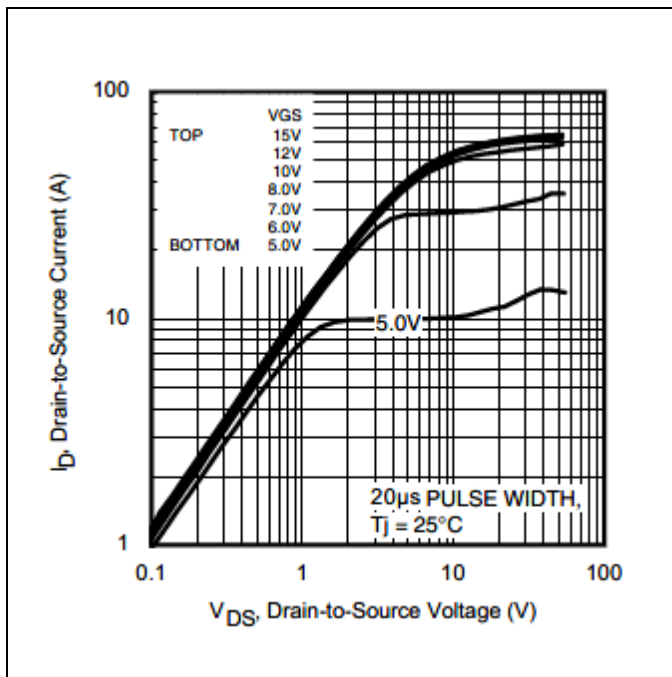


Figure 2 Typical Output Characteristics

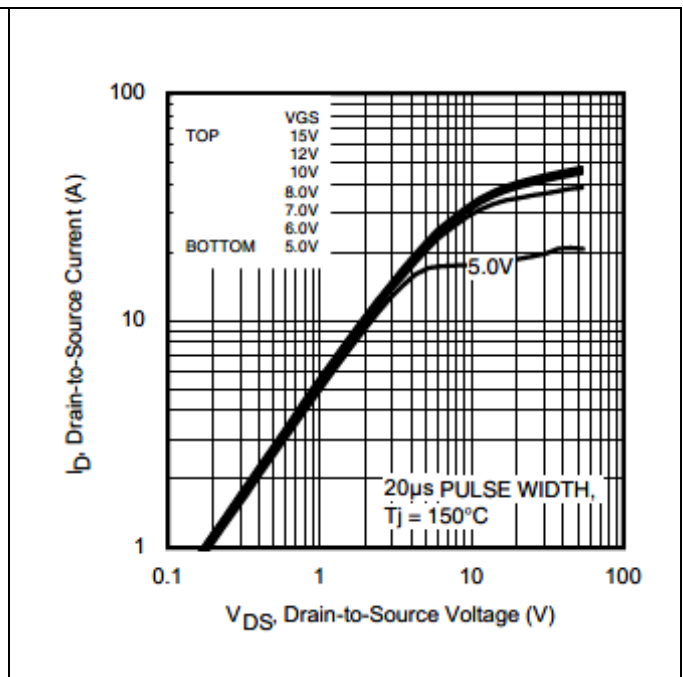


Figure 3 Typical Output Characteristics

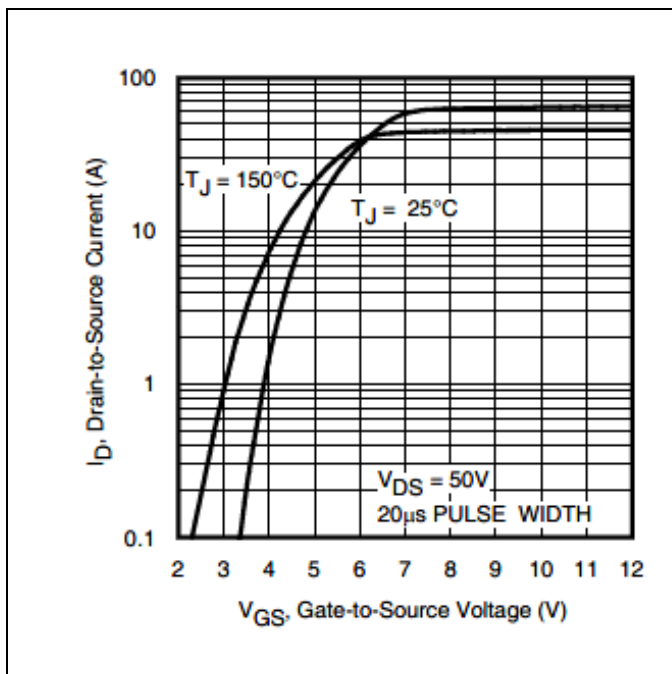


Figure 4 Typical Transfer Characteristics

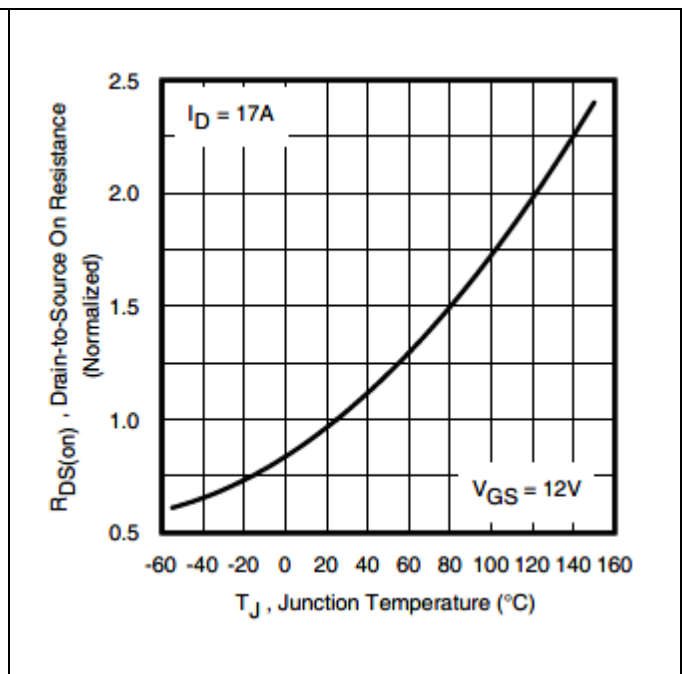


Figure 5 Normalized On-Resistance Vs. Temperature

IRHNJ9A7234, IRHNJC9A7234

Radiation Hardened Power MOSFET Surface Mount (SMD-0.5)

Electrical Characteristics Curves (Pre-irradiation)

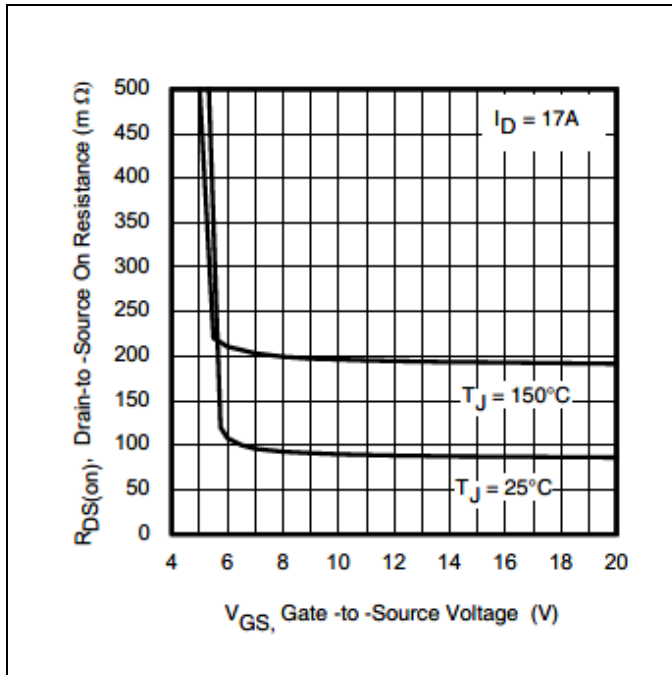


Figure 6 Typical On-Resistance Vs. Gate Voltage

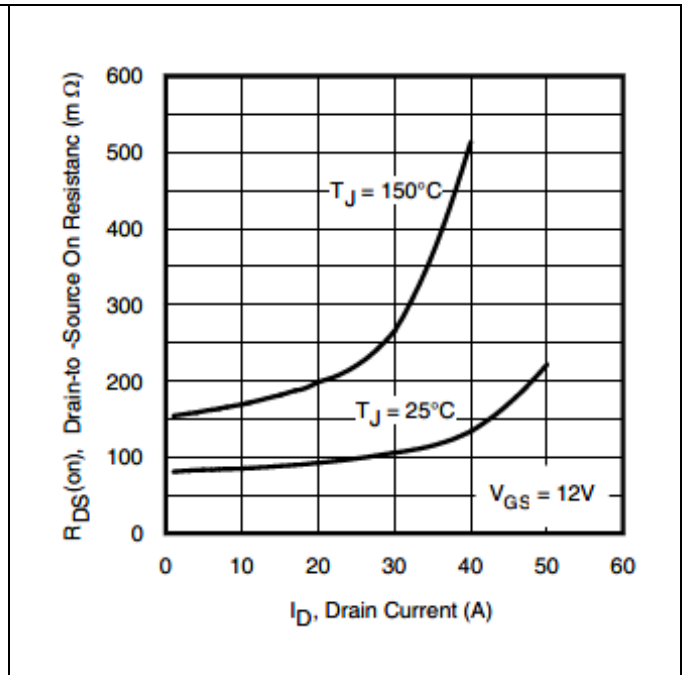


Figure 7 Typical On-Resistance Vs. Drain Current

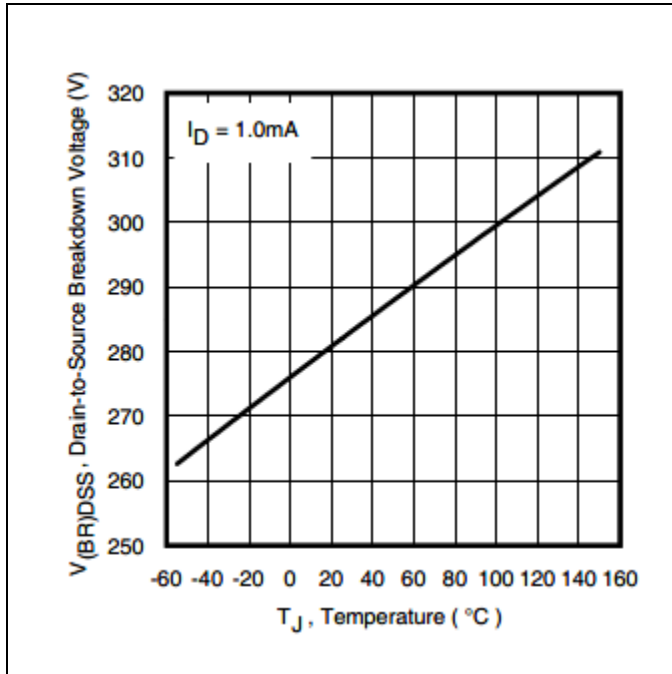


Figure 8 Typical Drain-to-Source Breakdown Voltage Vs. Temperature

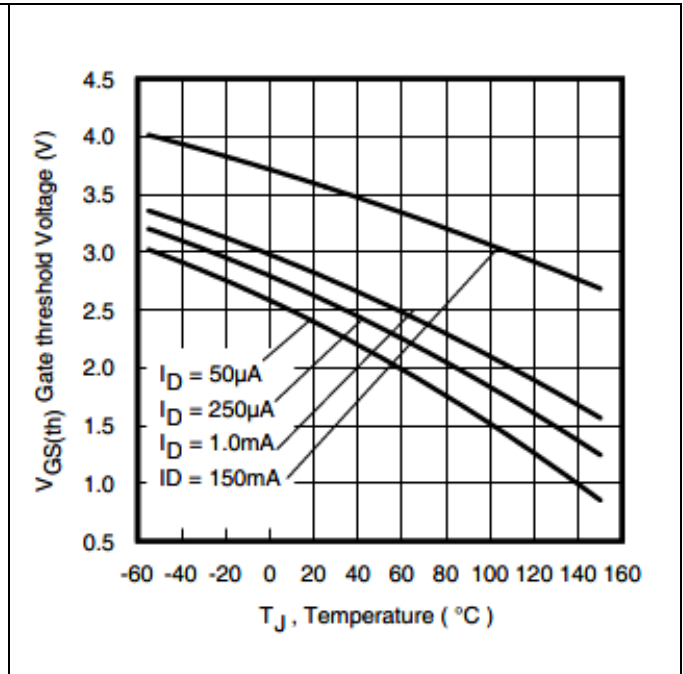


Figure 9 Typical Threshold Voltage Vs. Temperature

IRHNJ9A7234, IRHNJC9A7234

Radiation Hardened Power MOSFET Surface Mount (SMD-0.5)

Electrical Characteristics Curves (Pre-irradiation)

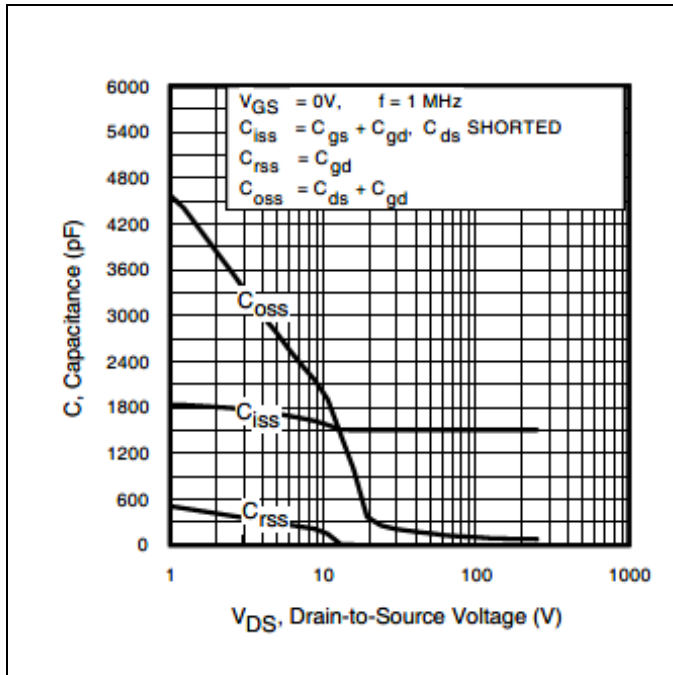


Figure 10 Typical Capacitance Vs. Drain-to-Source Voltage

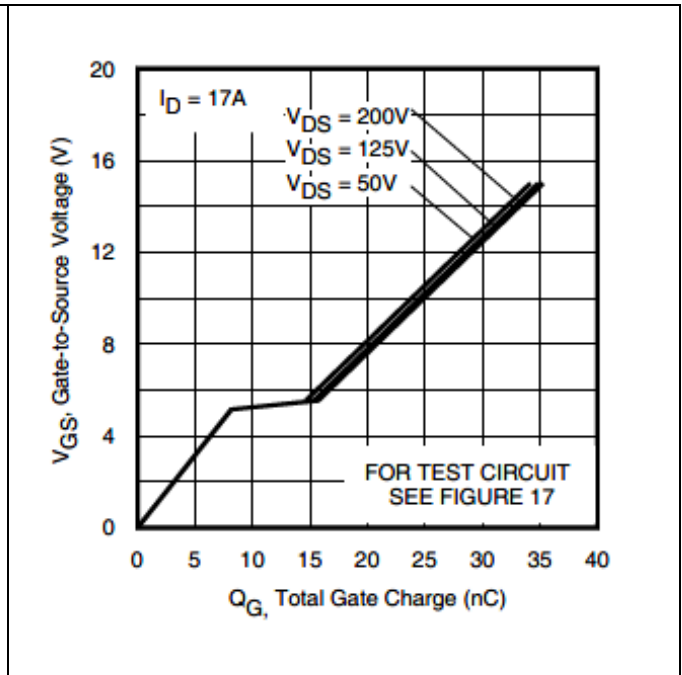


Figure 11 Typical Gate Charge Vs. Gate-to-Source Voltage

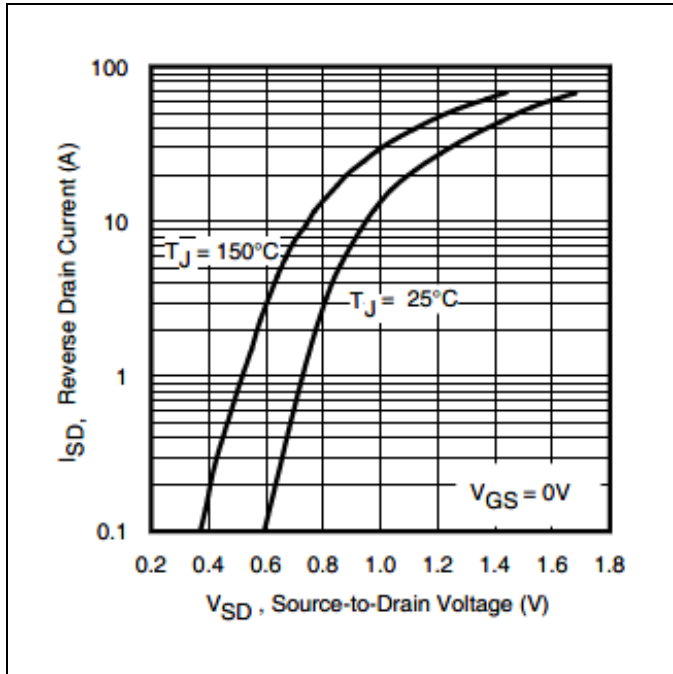


Figure 12 Typical Source-Drain Vs. Diode Forward Voltage

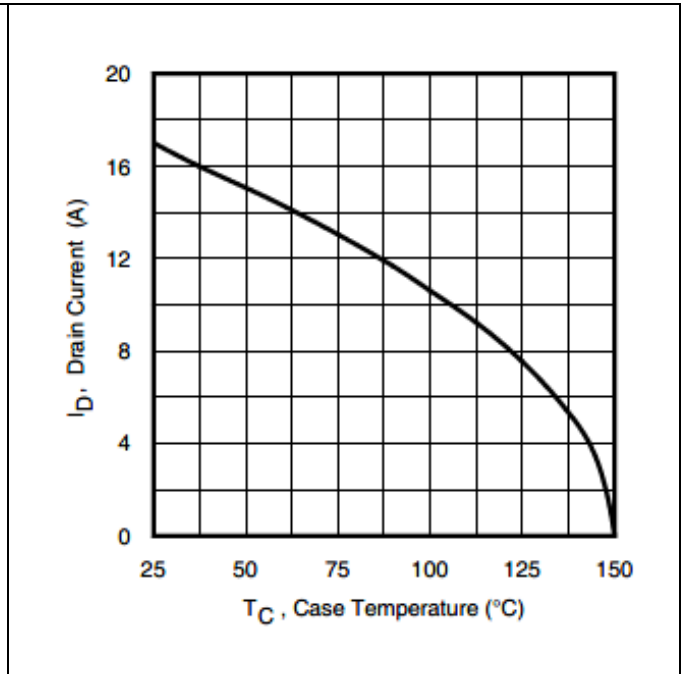


Figure 13 Maximum Drain Current Vs. Case Temperature

IRHNJ9A7234, IRHNJC9A7234

Radiation Hardened Power MOSFET Surface Mount (SMD-0.5)

Electrical Characteristics Curves (Pre-irradiation)

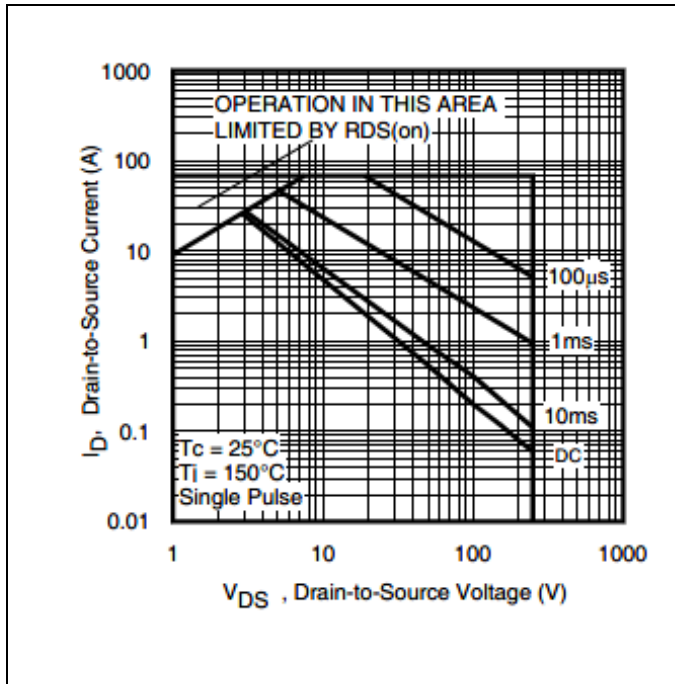


Figure 14 Maximum Safe Operating Area

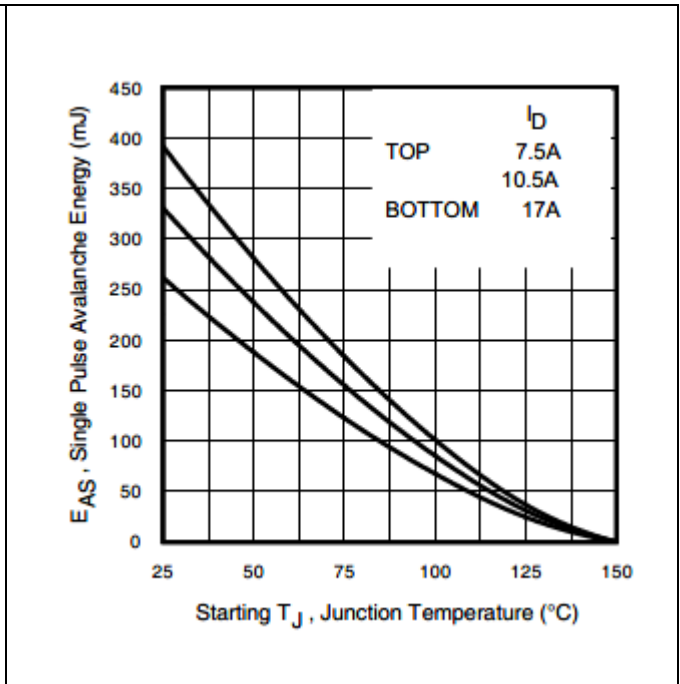


Figure 15 Maximum Effective Transient Thermal Impedance, Junction-to-Case

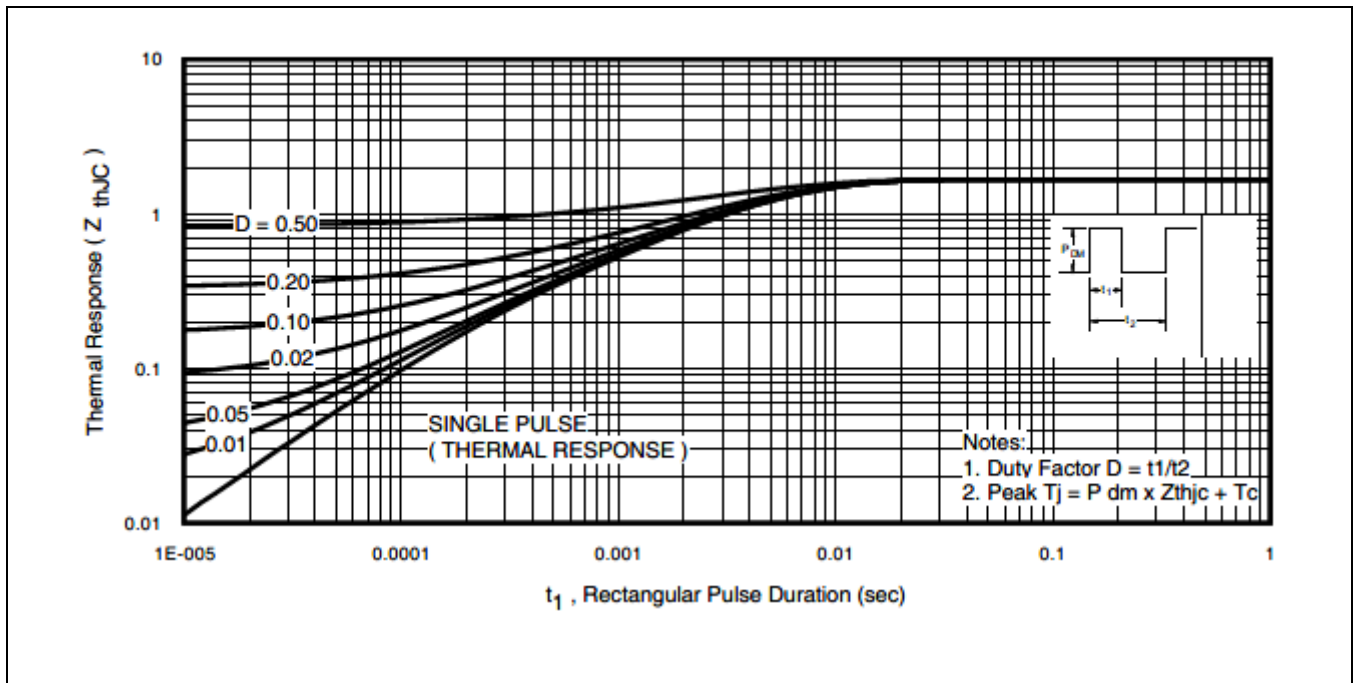


Figure 16 Maximum Effective Transient Thermal Impedance, Junction-to-Case

4 Test Circuits (Pre-irradiation)

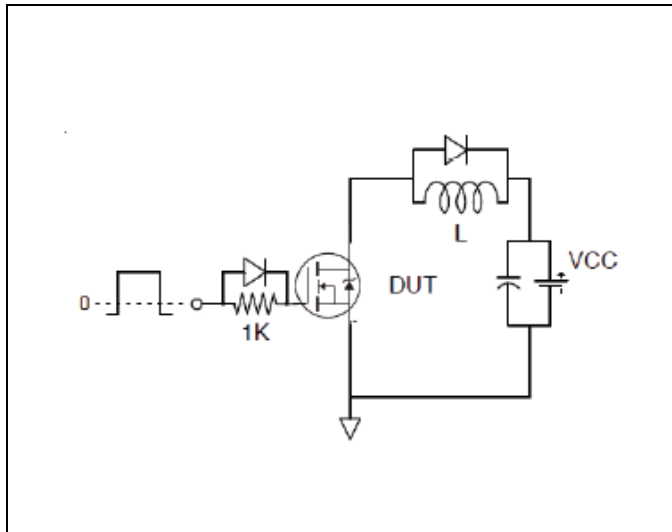


Figure 17 Gate Charge Test Circuit

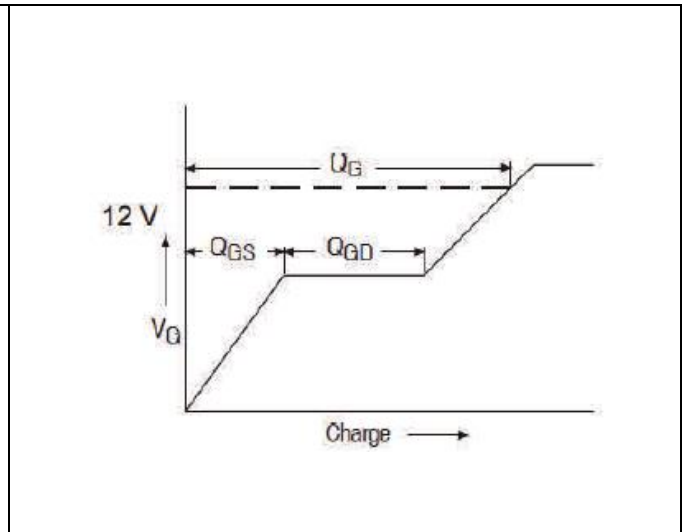


Figure 18 Gate Charge Waveform

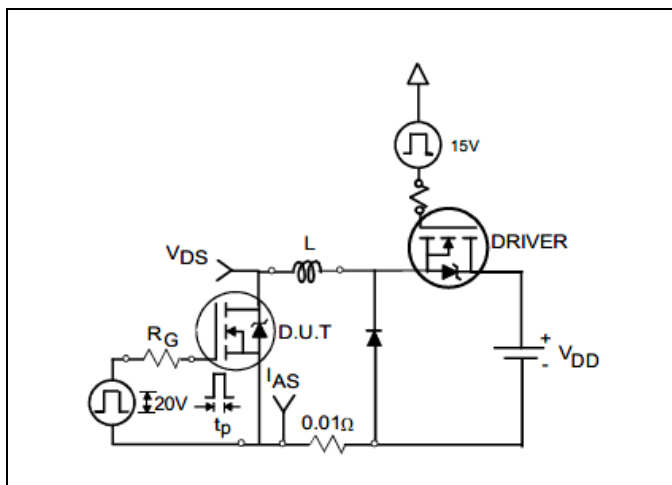


Figure 19 Unclamped Inductive Test Circuit

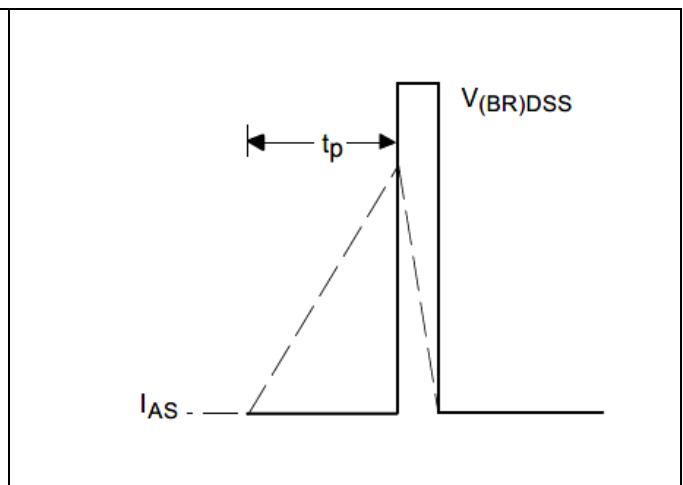


Figure 20 Unclamped Inductive Waveform

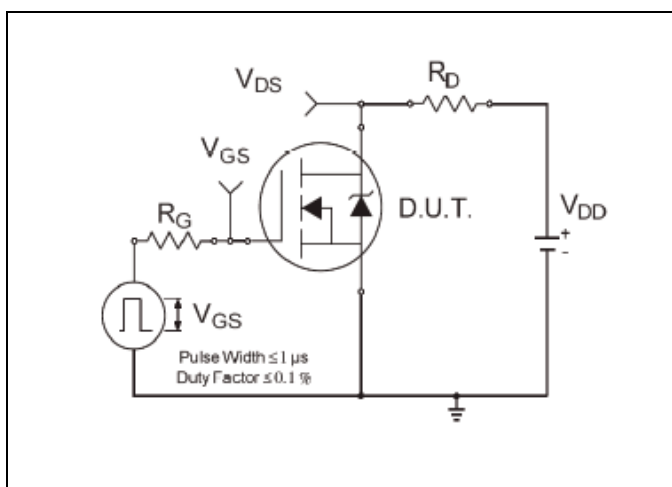


Figure 21 Switching Time Test Circuit

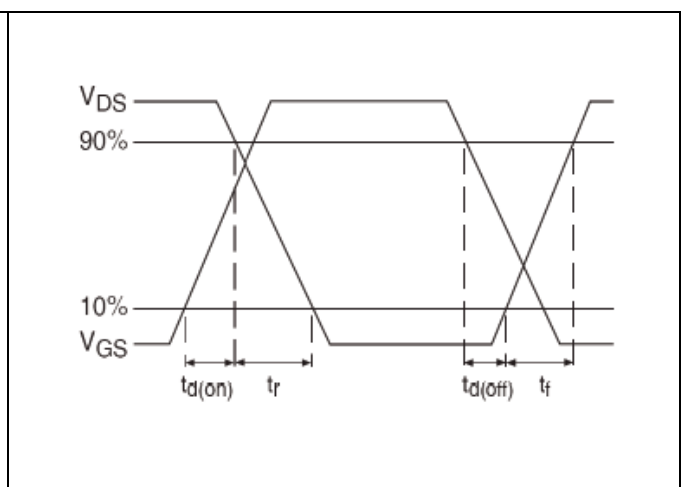


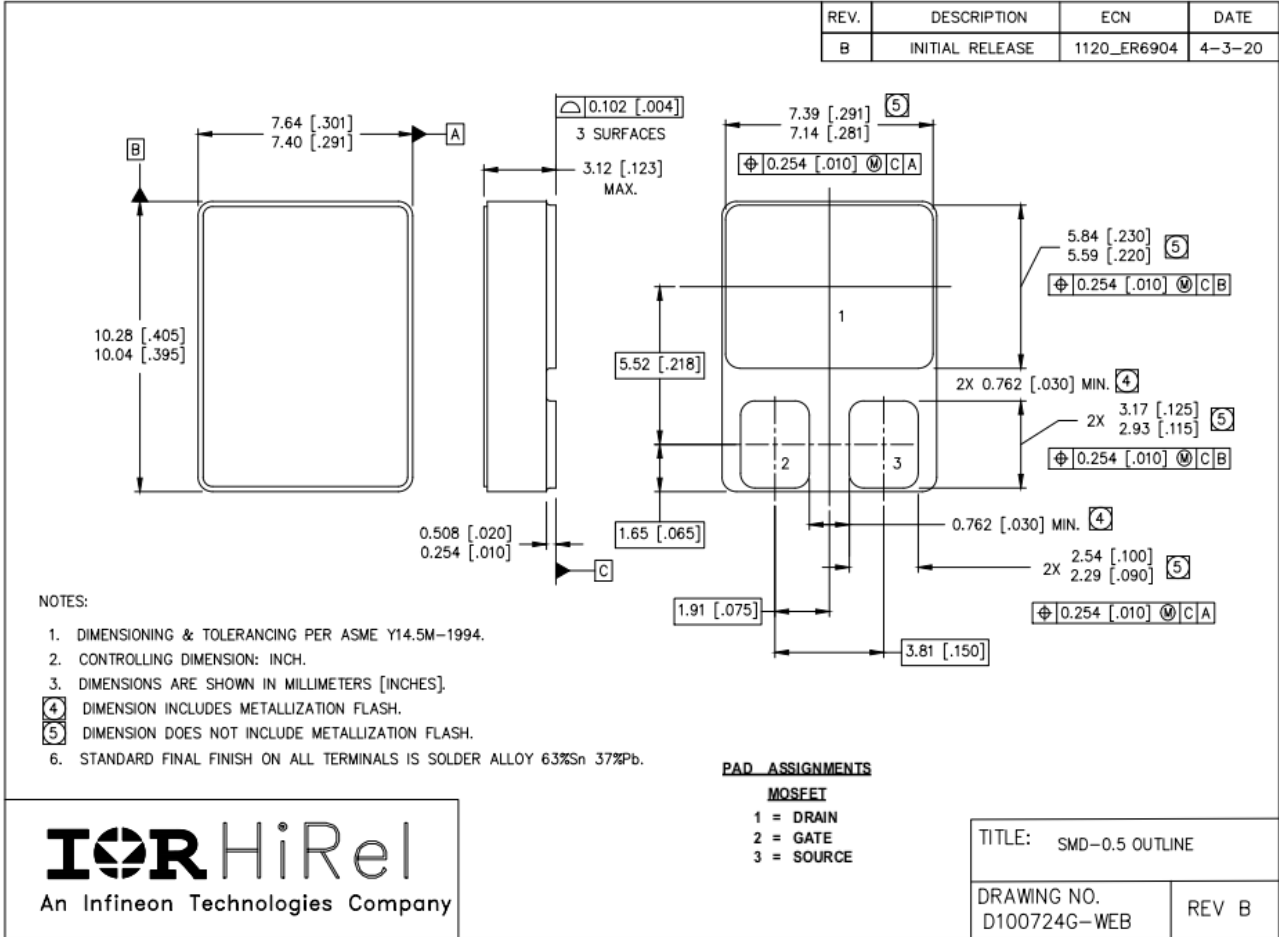
Figure 22 Switching Time Waveforms

Radiation Hardened Power MOSFET Surface Mount (SMD-0.5)

Package outline SMD-0.5

5 Package outline – SMD-0.5

Note: For the most updated package outline, please see the website: [SMD-0.5](#)



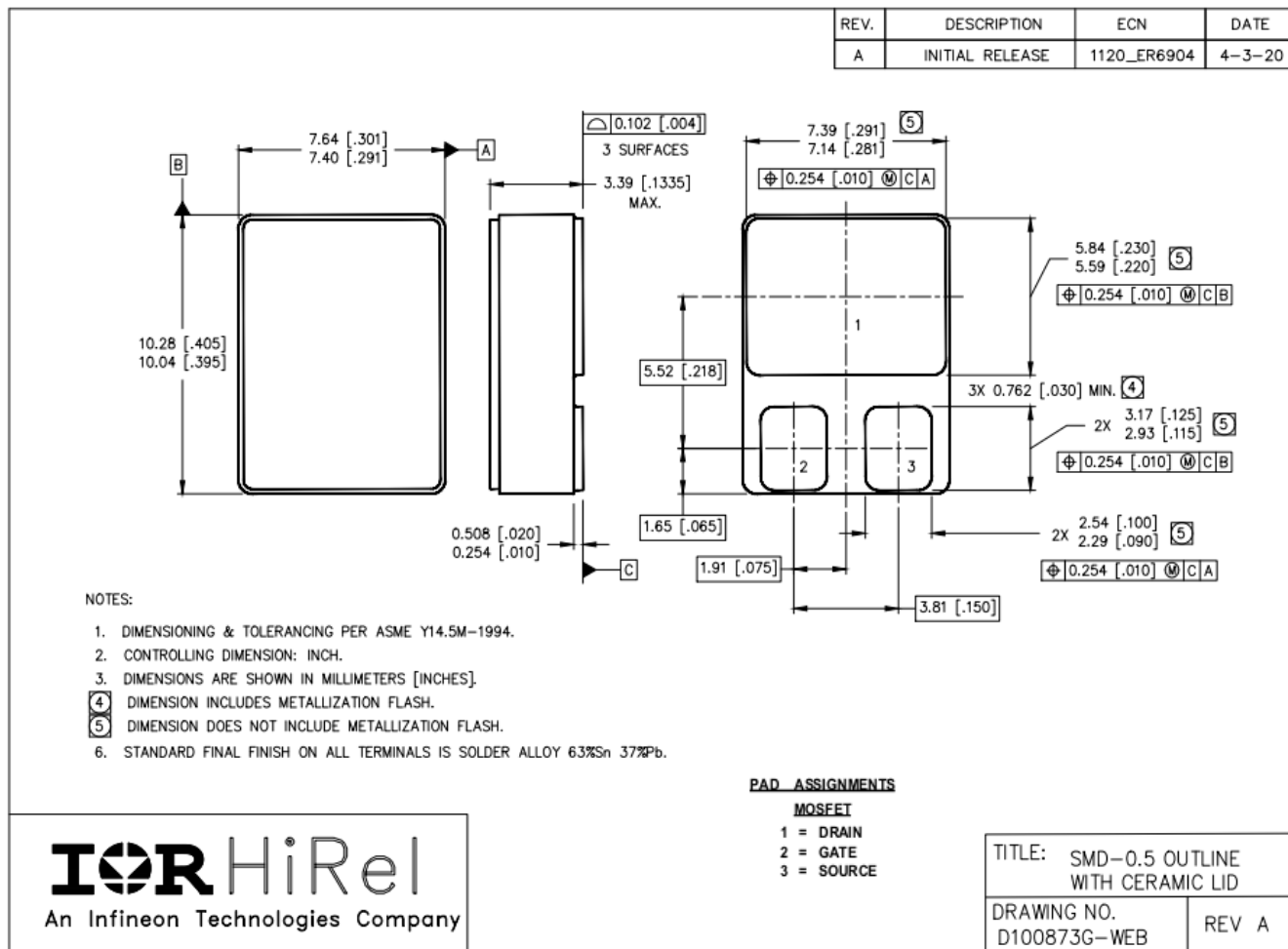
IRHNJ9A7234, IRHNJC9A7234

Radiation Hardened Power MOSFET Surface Mount (SMD-0.5)

Package outline SMD-0.5 with ceramic lid

6 Package outline – SMD-0.5 with ceramic lid

Note: For the most updated package outline, please see the website: [SMD-0.5 with ceramic lid](#)



Revision history

Revision history

Document version	Date of release	Description of changes
	10/28/2019	Datasheet (PD-97885A)
Rev B	05/09/2022	Updated based on ECN-1120_09100

Trademarks

All referenced product or service names and trademarks are the property of their respective owners.

Edition 2022-05-09

Published by

**International Rectifier HiRel Products,
Inc.**

**An Infineon Technologies company
El Segundo, California 90245 USA**

**© 2022 Infineon Technologies AG.
All Rights Reserved.**

**Do you have a question about this
document?**

Email: erratum@infineon.com

Document reference

IMPORTANT NOTICE

The information given in this document shall in no event be regarded as a guarantee of conditions or characteristics ("Beschaffheitsgarantie").

With respect to any examples, hints or any typical values stated herein and/or any information regarding the application of the product, Infineon Technologies hereby disclaims any and all warranties and liabilities of any kind, including without limitation warranties of non-infringement of intellectual property rights of any third party.

In addition, any information given in this document is subject to customer's compliance with its obligations stated in this document and any applicable legal requirements, norms and standards concerning customer's products and any use of the product of Infineon Technologies in customer's applications.

The data contained in this document is exclusively intended for technically trained staff. It is the responsibility of customer's technical departments to evaluate the suitability of the product for the intended application and the completeness of the product information given in this document with respect to such application.

For further information on the product, technology, delivery terms and conditions and prices please contact your nearest Infineon Technologies office (www.infineon.com).

WARNINGS

Due to technical requirements components may contain dangerous substances. For information on the types in question please contact your nearest International Rectifier HiRel Products, Inc., or Infineon Technologies company, office.

International Rectifier HiRel Components may only be used in life-support devices or systems with the expressed written approval of International Rectifier HiRel Products, Inc., an Infineon Technologies company, if failure of such components can reasonably be expected to cause the failure of that life-support device or system, or to affect the safety and effectiveness of that device or system.

Infineon Technologies' products may not be used in any applications where a failure of the product or any consequences of the use thereof can reasonably be expected to result in personal injury.

Life support devices or systems are intended to be implanted in the human body, or to support and/or maintain and sustain and/or protect human life. If they fail, it is reasonable to assume that the health of the user or other persons may be endangered.